

# See Everything

## **Mantis 360 Mid-Range** **360° Continuous Live Imagery**

IEC Infrared Systems designs and manufactures wide area surveillance and Remotely Operated Weapon systems that are intuitive, simple to operate and provide unmatched situational awareness and force protection. When surveillance is the first line of defense, IEC Infrared Systems is the solution.



- ⊕ *Live simultaneous 360° Panoramic Imaging in both visual and MWIR thermal spectrums*
- ⊕ *Variable scan rate of up to 360°/sec depending on VFOV and sensitivity settings*
- ⊕ *Terrain following mode allowing imaging of targets at differing elevations*
- ⊕ *Stop and Stare capability to zoom in on targets*
- ⊕ *Motion detection and tracking of multiple targets with accurate range capability to 2km using LRF & Werewolf assessment camera*
- ⊕ *Automated line-of-site/blind spot calculation display via Werewolf assessment camera*
- ⊕ *Integrates with Multiple Ground Radars, UGS, CBRNE Sensors and Ultra Long Range Assessment Cameras*

**IEC**  
**INFRARED SYSTEMS**  
*Integrated Surveillance Solutions*  
A Blackwing Company

**Security goes into everything we build.**

Export of these systems is under the control of the Office of Munitions Control, U.S. Department of State and is subject to the International Traffic in Arms Regulations and falls under the International Traffic in Arms Regulation per title 22, Code of Federal Regulations (CFR), Parts 120-130. Shipment without proper licensing by the U.S. Department of State or consent is strictly prohibited.

# Mantis 360 Mid-Range Specifications



## Thermal Detector

- 640x512 MWIR cooled InSb 15µm
- Spectral range 3-5µm
- NETD <22 millikelvin

## Thermal Optics

- 50mm f/1 MWIR motorized electric focus 8.2° VFOV
- Human detection to 1-2km
- Human recognition to 300-500m
- Human identification to 200m

## Visual Detector

- Spectral range 300-750 nanometers

## Visual Optics

- 8.2° VFOV

## Laser Range Finder

- Laser type 905 nm, eye-safe
- Measurement range 1- 2,000 m
- Distance measurement accuracy ±1 m

## Image Processing

- 4X digital zoom
- Motion detection and tracking of multiple targets
- Thermal/Visual image fusion

## Environmental

- Temperature  
Operational: -40° C to +60° C  
Storage: -46° C to +85° C

## Pan & Tilt

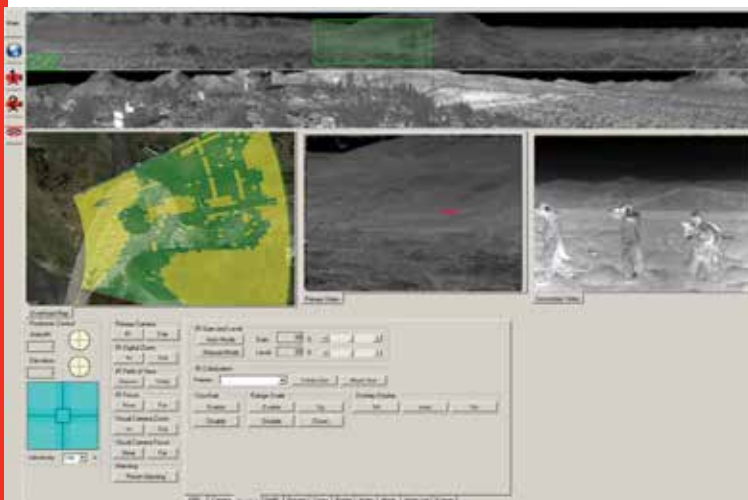
- 360° continuous pan
- +/-45° tilt

## Dimensions & Weight

- 16.2" Diameter x 33" Height
- 94lbs

## Power Consumption

- Sensor/Positioner (no heaters) 75w
- Sensor/Positioner (w/ heaters) 216w
- Processor 100w
- Total System Nominal Power (w/ heaters) 391w
- Total System Conservative Power (w/ heaters) 500w
- Total System Max Power (w/ heaters) 900w



IntrudIR Alert® C² Middleware



Security goes into everything we build.

7803 Freeway Circle  
Middleburg Heights, OH 44130  
440.234.8000  
www.iecinfrared.com